



FARMVILLE CORPORATE PARK

GENERAL

Acreage: 440 total acres (390 available)

Price: \$10,000 /acre

Industrial Lot Sizes: 5 – 100+ acres

Address: Fields Street Extension, Farmville, NC 27828

Location: Farmville, North Carolina, Greenville, NC MSA, USA

Zoning: Industrial

Former Use: Anderson Truss, Charm-Tex

Taxes: County Only .696 /\$100

Park Tenants: Coastal Beverage, DR Burton

PHYSICAL

Elevation: 80' to 86' above MSL

Appearance: Generally flat; All 50 acres of Phase I cleared

Soils: Sandy clay; Preliminary soil boring report available

Drainage: Existing ditches; High, well-drained, non-wetlands

Environmental: Phase I environmental review found no environmental issues

TRANSPORTATION

Access: Direct access to US 264-A

Freeway: Designated I-587 (US 264) controlled access, interstate quality highway | Distance: 4 miles (5 minutes)

Interstate: I-95 | Distance: 20 miles (20 minutes)

Regional Air: PGV Airport | Distance: 15 miles (20 minutes)

International Air: RDU Airport | Distance: 85 miles (85 minutes)

Closet Port: Morehead City | Distance: 99 miles (less than 2 hours); FTZ 214

UTILITIES

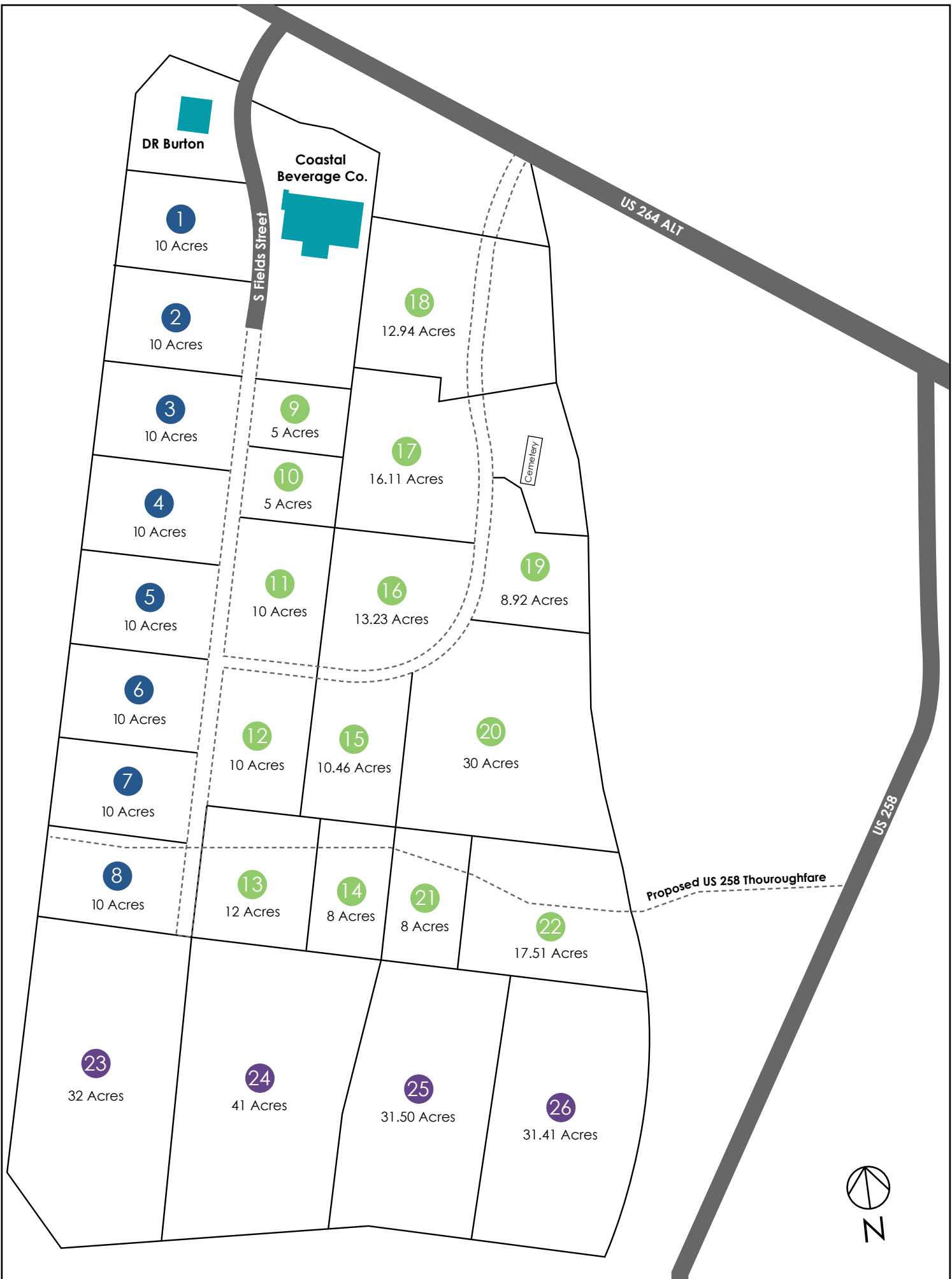
Water: 12" (Town of Farmville); 6 MGD capacity

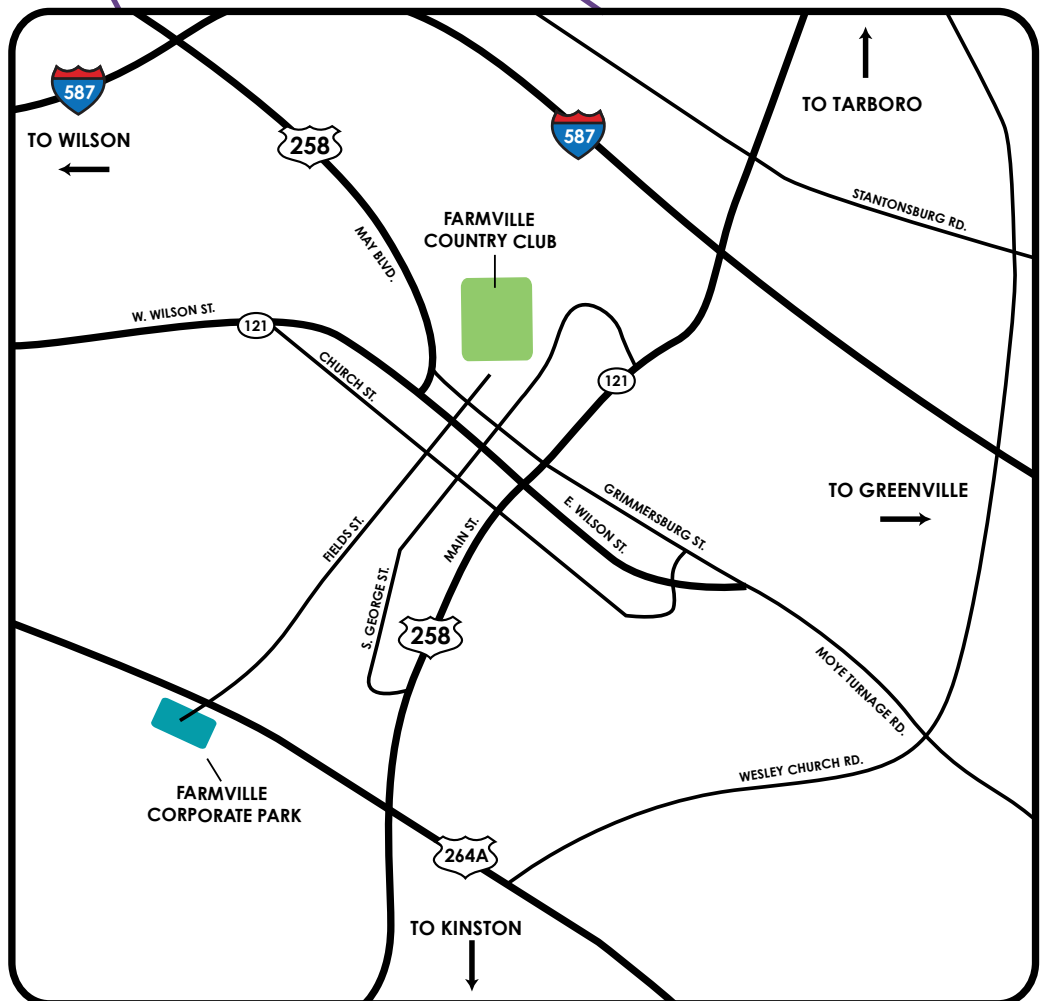
Sewer: 8" and 12" (Town of Farmville); 3 MGD capacity

Gas: 4" (Piedmont Natural Gas)

Electric: 12.5 KV Distribution (Pitt-Greene EMC) line on site served by 230 KV substation within 5000 feet; New dedicated industrial circuit to be constructed on site; 34.5 KV transmission line on site scheduled to be upgraded to 115 KV line

Telecommunications: Fiber optic facilities and broadband internet available (CenturyLink)





PITT COUNTY
DEVELOPMENT
COMMISSION

Contact:
252.902.2075
kelly.andrews@pittcountync.gov
www.locateincarolina.com